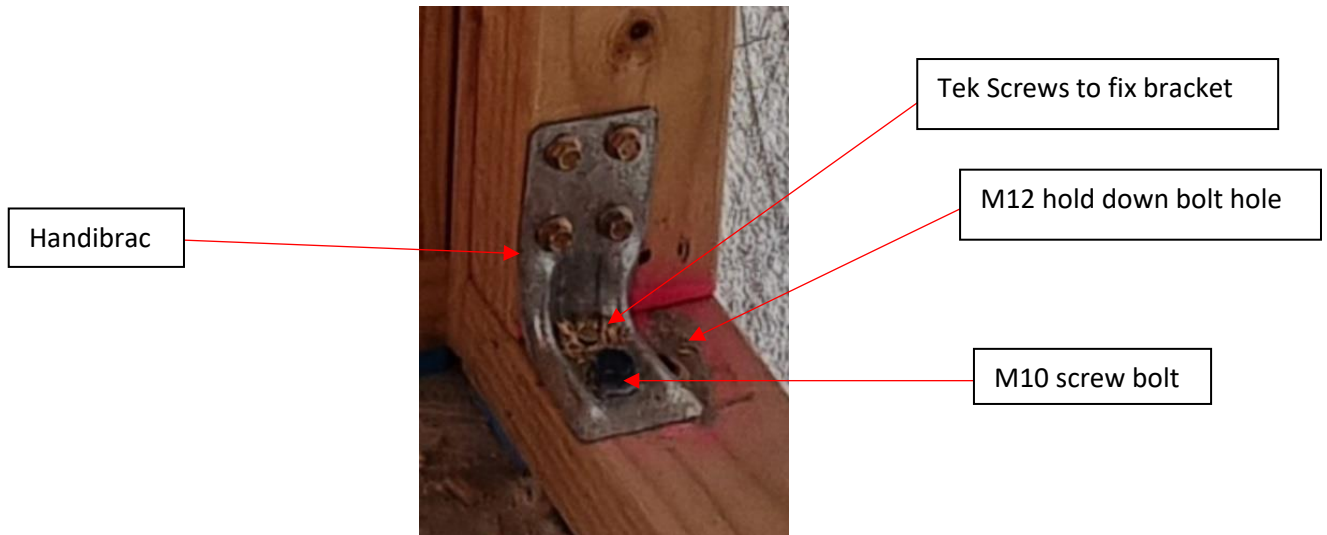


# SAFETY ALERT

<b>INCIDENT</b>	<b>INCID – 0041906</b>
<b>SUBJECT</b>	Serious Hand Laceration Installing Gib HandiBrac (A3)
<b>INCIDENT DATE</b>	28-01-2021
<b>BUSINESS UNIT</b>	Fletcher Residential Ltd (Fletcher Living) – Red Beach



## WHAT HAPPENED?

The contractor was installing GIB handibracs for framing requirements.

The contractor was holding the bracket with his left hand whilst drilling through the base of the handibrac when the drill bit caught the base of the handibrac and it twisted in his hand.

This resulted in a severe laceration to his left index finger that required urgent surgery to repair a nerve damaged by the bracket.

## IMPORTANT REMINDER FOR ALL OF US (pre-investigation)

- Are we following the manufacturer’s instructions for the installation of fixings, material, appliances etc?
- Are we using the correct tools for the job/task?
- Are our contractors trained in the task they are conducting?
- Have our Task Analysis’ been changed to reflect the change in handibrac componentry?
- Are we rushing this type of work rather than following the correct process?
- Do our contractors know the correct reporting requirements for injuries?
- Are we wearing the correct PPE for the task at hand?

## FOR MORE INFORMATION, PLEASE CONTACT

Charlie Meredith, Construction Manager, E: [CMeredith@frl.co.nz](mailto:CMeredith@frl.co.nz) ; M: +64 27 202 3154